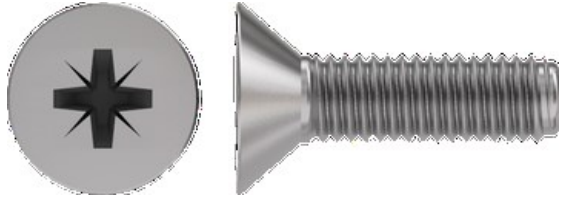
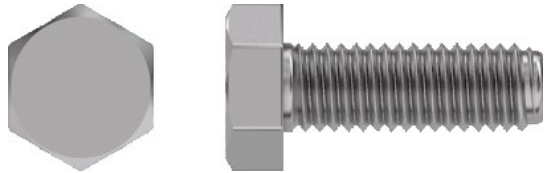


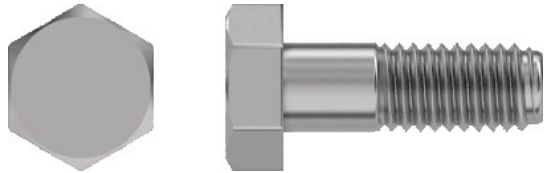
ISO 7045



ISO 7046



DIN 933



DIN 931



ISO 4762



ISO 4026

FLAT



ISO 4027



ISO 4029

CUP



ISO 4032 (DIN 934)



ISO 7040 (DIN 982)



DIN 985



DIN 6797A



DIN 6797J



ISO 7089 (DIN 125A)

- All cross headed screws Pozi drive unless specified
- All specifications valid for A2 & A4 SS
- All images from www.trfastenings.com